

**Urban chic
finds a new
home in the
countryside**

Daily Telegraph

Corner Place
1&2 bedroom apartments

Ground floor: Plots 7,8
First floor: Plots 8,9,10,11
Second floor: Plots 8,12, 13,14
Third floor: Plot 15

Designed by ECD of London this apartment building will blend and complement North Chase and previous phases in its design and materials. Comprising 1 and 2 bedroom apartments as well as homes with work / living spaces designed for those wishing to either work from home or looking for true flexibility.



Plot 7
1 bedroom
Ground floor
Living / Dining
6.48m x 3.25m
Kitchen
2.94m x 1.78m
Bedroom
3.25m x 3.00m
Bathroom

Plot 8
2/3 bedroom
Flexible Live / Work Studio
Ground floor
Live / Work Studio
6.40m x 5.50m
Kitchen
Shower room
First floor
Living / Kitchen / Dining
6.40m x 5.50m
Cloakroom
Second floor
Bedroom 1
4.00m x 3.00m
En suite shower
Bedroom 2
6.10m x 2.30m
Study or Bedroom 3
4.51m x 2.19m
Bathroom

Plot 9
1 bedroom
First floor
Living / Kitchen / Dining
7.30m x 3.10m
Bedroom
3.00m x 3.40m
Bathroom
Plot 10
1 bedroom
First floor
Living / Dining
3.85m x 3.40m
Kitchen
2.02m min x 3.85m
Bedroom 1
4.00m x 3.00m
En suite shower
Bedroom 2
6.10m x 2.30m
Study or Bedroom 3
4.51m x 2.19m
Bathroom

Plot 11
2 bedrooms
First floor
Living / Dining
6.20m x 3.83m
Kitchen (triangular)
3.04m x 2.10m max
Bedroom 1
4.59m max x 3.81m max
Bedroom 2
3.81m x 2.87m
Bathroom
Plot 12
1 bedroom
Second floor
Living / Kitchen / Dining
7.30m x 3.10m
Bedroom
3.40m x 3.15m
Bathroom

Plot 13
1 bedroom
Second floor
Living / Dining
3.85m x 3.40m
Kitchen
3.85m x 2.02m
Bedroom
3.33m x 3.17m
Bathroom
Plot 14
2 bedrooms
Second floor
Living / Dining
6.20m x 3.63m
Kitchen
3.04m x 2.10m
Bedroom
4.59m x 3.81m
Bedroom 2
3.81m x 2.87m
Bathroom

Plot 15
1 bedroom
Third floor
Living / Dining
4.75m x 3.76m
Kitchen
3.59m x 2.30m
Bedroom
4.75m x 3.57m
Bathroom
Roof terrace
12.30m x 2.00m



Focus
1,2&3 bedroom apartments

Ground floor: Plots 35,37
First floor: Plots 35-37
Second / Third floors: Plots 38-40

Designed by Richard Murphy Architects of Edinburgh and continuing his architectural theme Focus is an 3 level apartment building of 1, 2 & 3 bedroom apartments, either on one or two levels; the split level units having upside down living arrangements to give an even better outlook.



Plot 35
1 bedroom
Ground floor
Studio
8.20m max x 4.68m max
WC
First floor
Living
5.03m x 4.63m
Kitchen
3.52m x 2.28m
Bedroom
3.52m x 3.10m
Bathroom

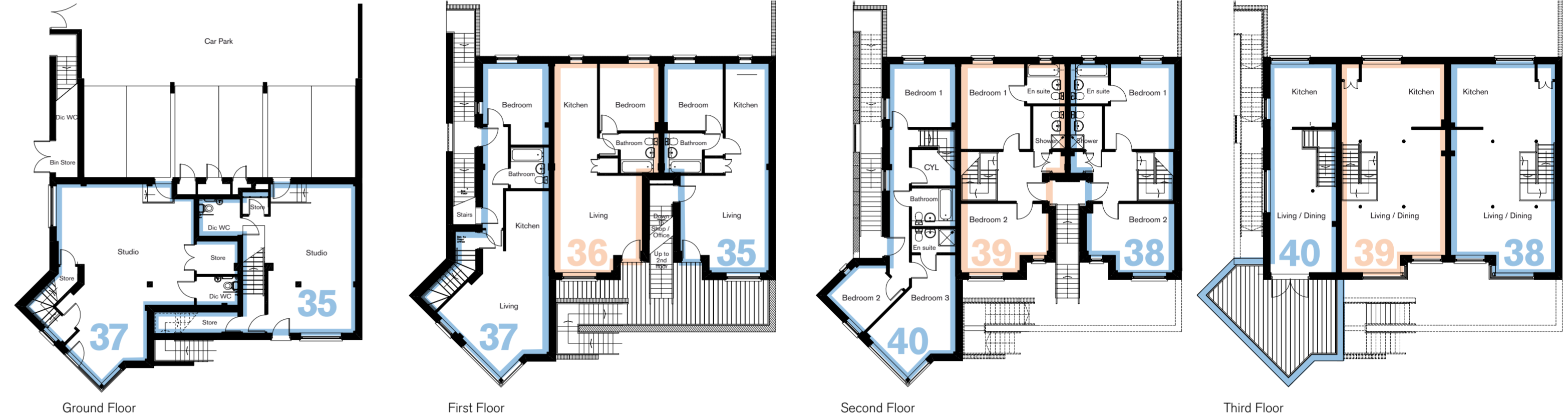
Plot 36
1 bedroom
First floor
Living
5.03m x 4.62m
Kitchen
3.12m x 2.27m
WC
First floor
Bedroom
3.52m x 3.10m
Bathroom

Plot 37
1 bedroom
Ground floor
Studio
10.00m max x 7.5m max
WC
First floor
Living
5.39m max x 4.75m max
Kitchen
3.12m x 2.27m
Bedroom
3.48m x 3.19m
Bathroom

Plot 38
2 bedrooms
Second floor
Bedroom 1
4.47m x 3.68m
En suite bathroom
Bedroom 2
4.63m x 3.62m
Shower
Upper level
Living / Kitchen / Dining
10.89m x 5.48m

Plot 39
2 bedrooms
Second floor
Bedroom 1
4.47m x 3.67m
En suite bathroom
Bedroom 2
4.62m x 3.62m
Shower
Upper level
Living / Kitchen / Dining
10.89m x 5.48m

Plot 40
3 bedrooms
Second floor
Bedroom 1
3.48m x 3.32m
Bedroom 2
3.02m x 2.76m
Bedroom 3
5.17m x 3.18m
En suite bathroom
Bathroom
Upper level
Living / Dining
7.42m x 3.50m
Kitchen
3.50m x 3.32m



The ZigZag
1&2 bedroom apartments

Ground floor: Plots 22-24
First floor: Plots 22-27
Second floor: Plots 29,32-34
Third floor: Plots 28-31

Designed by ORMS the 'ZigZag' is the focal point of North Chase. Designed to compliment the adjacent buildings with views across the park and 'green wedge'. The ZigZag incorporates a variety of units which include commercial spaces with potential cafe use; flexible live / work units and a range of 1 and 2 bedroom apartments.



Plot 22
2 bedrooms
Ground floor
Flexible Live / Work space
6.40m x 3.62m
Kitchen
3.12m x 2.85m
First floor
Bedroom 1
4.08m x 3.94m
En suite shower
Bedroom 2
4.66m max x 3.01m
Bathroom

Plot 24
2 bedrooms
Ground floor
Flexible Live / Work space
7.90m x 3.61m
Kitchen
2.83m x 2.46m
First floor
Bedroom 1
4.08m x 3.94m
En suite shower
Bedroom 2
4.66m max x 3.01m
Bathroom

Plot 26
1 bedroom
First floor
Living / Kitchen / Dining
7.30m x 3.89m
Bedroom
3.62m x 3.02m
Bathroom
Plot 27
2 bedrooms
First floor
Living / Kitchen / Dining
7.3m x 4.00m
Bedroom 1
3.87m x 3.08m
En suite shower
Bedroom 2
3.67m x 3.06m
Bathroom

Plot 29
2 bedrooms
Second floor
Bedroom 1
4.23m x 3.99m
En suite shower
Bedroom 2
3.08m x 2.75m
Bathroom
Upper level
Living / Kitchen / Dining
6.23m x 4.00m
Plot 30
2 bedrooms
Second floor
Living / Kitchen / Dining
7.40m x 6.92m
Bedroom 1
4.04m x 3.65m
En suite shower
Bedroom 2
3.24m x 2.84m
Bathroom

Plot 31
2 bedrooms
Second floor
Living / Kitchen / Dining
7.30m x 3.78m
Bedroom 1
3.87m x 3.08m
Bedroom 2
4.57m x 3.14m
Bathroom
Plot 32
2 bedrooms
Third floor
Living / Kitchen / Dining
6.50m x 6.06m
Bedroom 1
4.13m x 2.84m
En suite shower
Bedroom 2
3.24m x 2.84m
Bathroom

Plot 33
2 bedrooms
Third floor
Living / Kitchen / Dining
6.89m x 6.40m
Bedroom 1
5.34m x 2.73m
En suite shower
Bedroom 2
4.10m x 2.42m
Bathroom
Plot 34
2 bedrooms
Third floor
Living / Kitchen / Dining
6.40m x 6.38m
Bedroom 1
3.40m max x 2.66m max
En suite shower
Bedroom 2
4.13m x 3.33m
Bathroom
Roof Terrace



Disclaimers
These particulars should be treated as general guidance only and should not be relied upon as statements or representations of fact. We operate a policy of continual product development and individual features may vary. We recommend intending purchasers satisfy themselves by personal inspection or otherwise, as to correctness of these particulars. If you are in any doubt please contact one of our Sales Consultants.
Measurements are approximate +/- 5% and are not intended to be used for carpet sizes or items of furniture. All furniture outlines are for suggested positions only. Newhall operates a policy of continual product development and room layouts and specifications may be subject to minor modifications. Window positions may vary from plot to plot. For exact details please contact our Sales Consultants. All total areas listed are to structural measurements.
All imagery is computer generated. The external elevations, architectural detailing and landscaping are indicative only and may vary from illustrations.